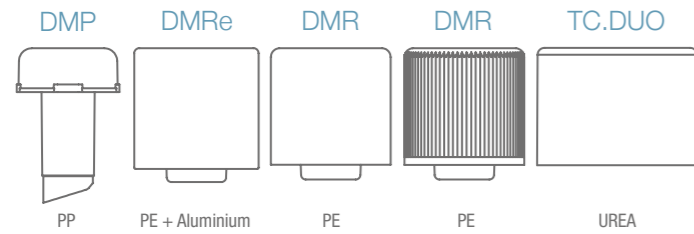


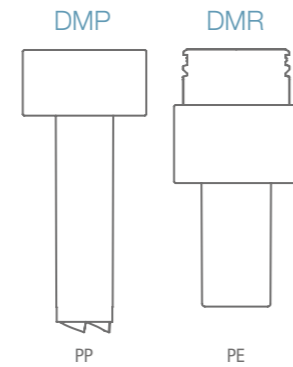
DECORATION OPTIONS:



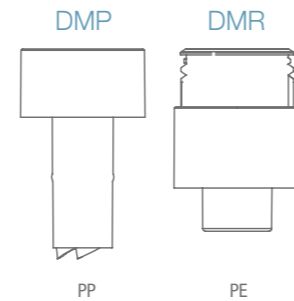
DUO.M1



DUO.M2: 3ml



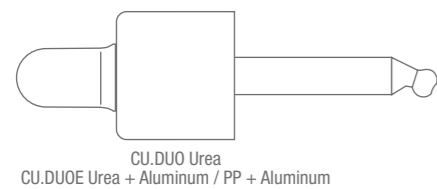
DUO.M2.0: 2ml



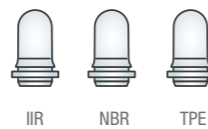
DECORATION OPTIONS:



CU.DUO & CU.DUOE:



BULB MATERIAL:

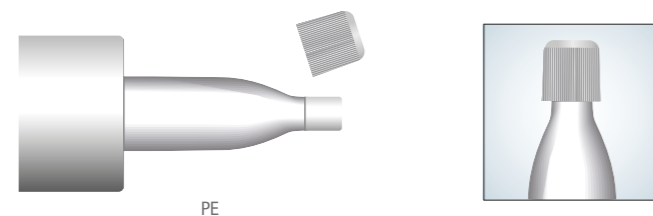


SPECIAL PROPRIETARY RUBBER BULB FORMULAS FOR EXCELLENT PRODUCT COMPATIBILITY. FORMULATION PROPRE D'ELASTOMÈRES POUR UNE TOTALE COMPATIBILITÉ AVEC LE PRODUIT.

DECORATION OPTIONS:



DMR.DOSI:



PLEASE CONSULT US ABOUT CUSTOM DESIGNED MODELS. DÉVELOPPEMENT DE SPÉCIFIQUES SUR CONSULTATION.

THE INFORMATION SHOWN ABOVE IS INTENDED AS A GUIDE ONLY AND MAY BE SUBJECT TO CHANGE WITHOUT PRIOR NOTIFICATION. LES INFORMATIONS CI-DESSUS MENTIONNÉES SONT DONNÉES À TITRE INDICATIF ET PEUVENT FAIRE L'OBJET DE MODIFICATIONS SANS PRÉ-AVIS.

VIROSPACK RECOMMENDS THAT ALL MATERIALS ARE SUBJECT TO COMPATIBILITY TESTING. A COMPATIBILITY TESTING SERVICE IS AVAILABLE TO ALL CLIENTS. VIROSPACK RECOMMANDE DES TESTS DE COMPATIBILITÉ POUR CHAQUE PRODUIT À CONDITIONNER. TOUS NOS CLIENTS DISPOSENT DE NOTRE LABORATOIRE POUR EFFECTUER CES TESTS.

Juli Galve i Brusson 19, 08918 BADALONA (Barcelona) Spain
Tel. +34 934 602 066 · Fax. +34 934 603 345
sales@virospack.com
www.virospack.com

virospack The Dropper Company

VP/ 2022

virospack

The Dropper Company

DUO MIX - POWDER-DISPENSING SYSTEM
DUO MIX - BOUCHON MÉLANGEUR POUR POUDRE

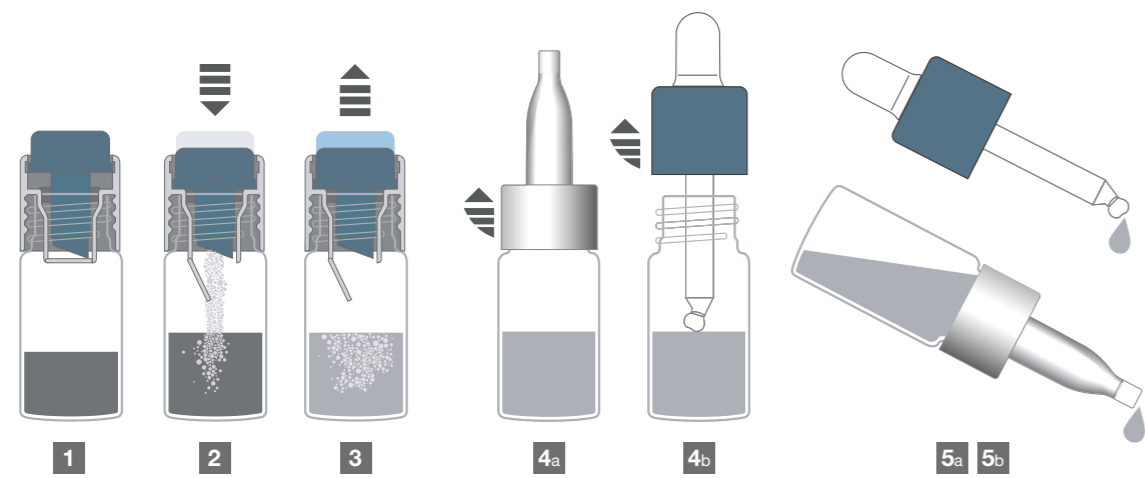


- Powder-dispensing system for two-component extemporaneous products (powder/liquid and liquid/liquid): vitamin C, whitening treatments,...
- Bouchon mélangeur pour préparations extemporanées (poudre/liquide et liquide/liquide): cure vitamine C, traitements blanchissants,...
- Ideal for presentation box displaying or selective treatment range.
- Packaging idéal pour présentation en coffret avec positionnement pharmaceutique ou sélectif.

IN-HOUSE MANUFACTURING AND DECORATION. MADE IN BARCELONA, SPAIN.

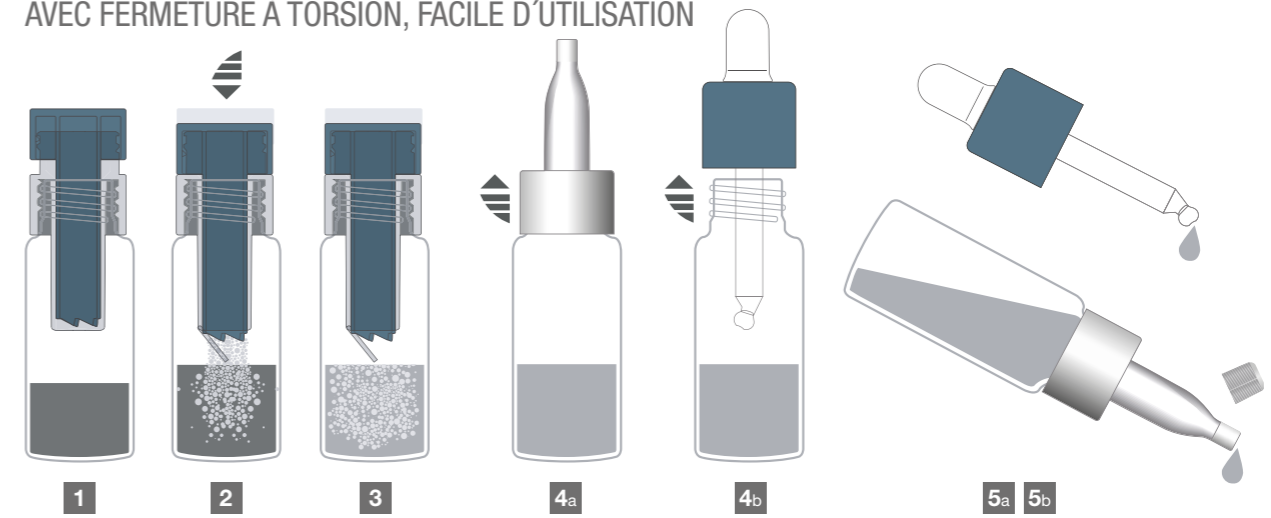
DUO.M1

EASY AND INTUITIVE TO USE
PRATIQUE ET FACILE D'UTILISATION



DUO.M2 & DUO.M2.0

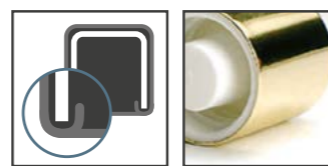
NEW DESIGN OF A LARGER INTEGRATED PISTON WITH TWIST CLOSURE, EASY TO USE
NOUVELLE CONCEPTION D'UN PISTON INTÉGRÉ PLUS GRAND AVEC FERMETURE À TORSION, FACILE D'UTILISATION



DECORATION OPTIONS:

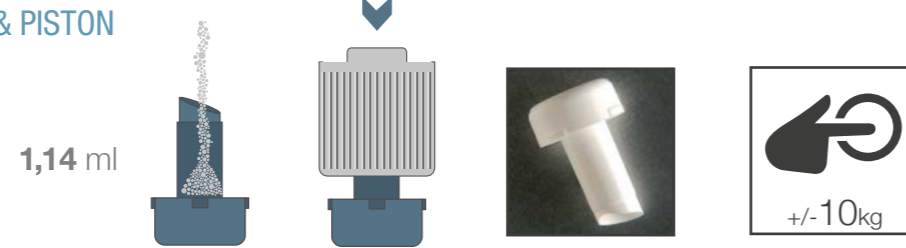


THREE VERSIONS: SMOOTH SIDED PE,
RIBBED PE, ANODIZED
ALUMINIUM SLEEVE
TROIS VERSIONS: PE LISSE,
PE STRIÉ, CHAPÉ MÉTAL



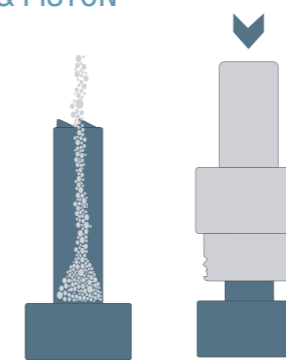
ALL METAL COMPONENTS
HAVE NOMAR-EDGE
TECHNOLOGY
TOUS LES COMPOSANTS
ONT UNE FINITION
NOMAR-EDGE

RESERVOIR CAP & PISTON

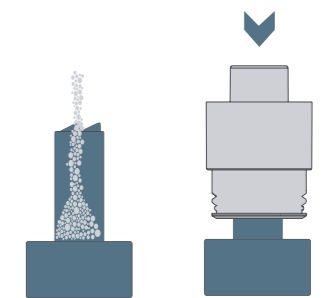


RESERVOIR CAP & PISTON

DUO.M2:
3,00 ml



DUO.M2.0:
2,00 ml



	DUO.M1	DUO.M1	DUO.M1	DUO.M2.0	DUO.M2.0	DUO.M2	DUO.M2	DUO.M2
DECO AREA (mm)	5 (mm)							
Capacity	5 ml	10 ml	15 ml	10 ml	15 ml	10 ml	15 ml	20 ml
Dimensions (H x W)	H 13,5 x W 76,2mm	H 28,0 x W 76,2mm	H 41,5 x W 76,2mm	H 28,5 x W 83,25mm	H 38,5 x W 83,25mm	H 41,5 x W 83,25mm	H 53,5 x W 83,25mm	H 53,5 x W 92,67mm
Dimensions (Ø x H)	Ø 24,25 x H 40mm	Ø 24,25 x H 55mm	Ø 24,25 x H 68mm	Ø 26,50 x H 55mm	Ø 26,50 x H 65mm	Ø 26,50 x H 68mm	Ø 26,50 x H 80mm	Ø 29,50 x H 80mm